



# CorePro LED PLL



## CorePro LED PLL HF 24W 865 4P 2G11

Philips CorePro LED PLL is the ideal uplamping solution for downlights & luminaires in a wide range of general lighting applications. It integrates a LED light source into a traditional fluorescent form factor to offer superb energy savings over a lifetime that's twice as long as fluorescent alternatives.

### Product data

General Information	
Cap base	2G11 [ 2G11]
EU RoHS compliant	Yes
Nominal lifetime (nom.)	30000 h
Switching cycle	50,000X
	Sphere
Light Technical	
Colour Code	865 [ CCT of 6,500 K]
Beam Angle (Nom)	160 °
Luminous flux (nom.)	3400 lm
Colour designation	Cool Daylight
Correlated Colour Temperature (Nom)	6500 K
Luminous efficacy (rated) (nom.)	141.00 lm/W
Colour consistency	<6
Colour rendering index (nom.)	83
LLMF at end of nominal lifetime (nom.)	70 %
Operating and Electrical	
Input frequency	20000-70000 Hz
Power (Rated) (Nom)	24 W
Lamp current (max.)	600 mA
Lamp current (min.)	400 mA

Starting time (nom.)	0.5 s
Warm-up time to 60% light (nom.)	0.5 s
Power factor (nom.)	0.9
Voltage (Nom)	53-77 V

Temperature	
T-ambient (max.)	45 °C
T-ambient (min.)	-20 °C
T storage (max.)	65 °C
T storage (min.)	-40 °C
T-Case maximum (nom.)	70 °C

Controls and Dimming	
Dimmable	No

Mechanical and Housing	
Product length	540 mm
Bulb shape	Tube, single-ended

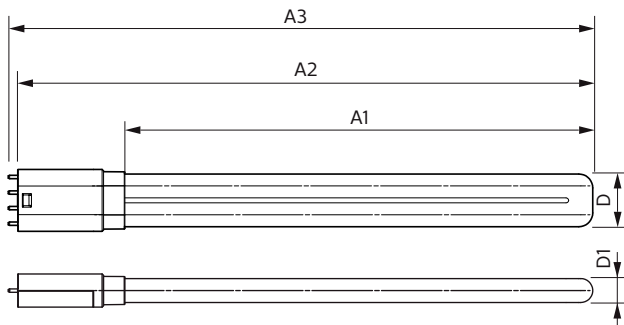
Approval and Application	
Energy Efficiency Class	E
Energy-saving product	Yes

# CorePro LED PLL

Approval marks	TUV CE marking RoHS compliance KEMA Keur certificate
Energy consumption kWh/1,000 hours	24 kWh
	387357
<b>Product Data</b>	
Full product code	871869682843400
Order product name	CorePro LED PLL HF 24W 865 4P 2G11

EAN/UPC – product	8718696828434
Order code	82843400
SAP numerator – quantity per pack	1
Numerator – packs per outer box	10
SAP material	929001920602
SAP net weight (piece)	0.160 kg

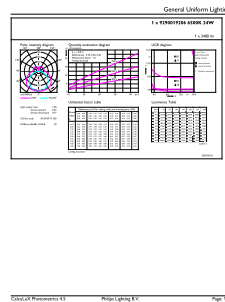
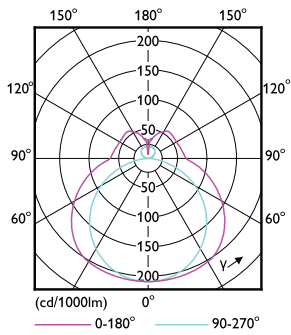
## Dimensional drawing



CorePro LED PLL HF 24W 865 4P 2G11

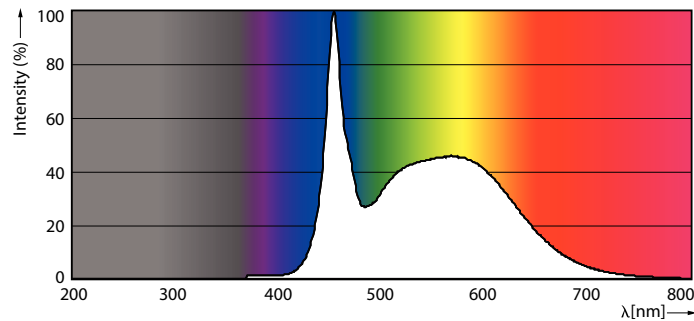
Product	D	D1	A1	A2	A3
CorePro LED PLL HF 24W 865 4P 2G11	37.6 mm	17 mm	453 mm	528.5 mm	535.1 mm

## Photometric data



LEDtube CorePro PLL HF 24W 2G11 830 24D ND

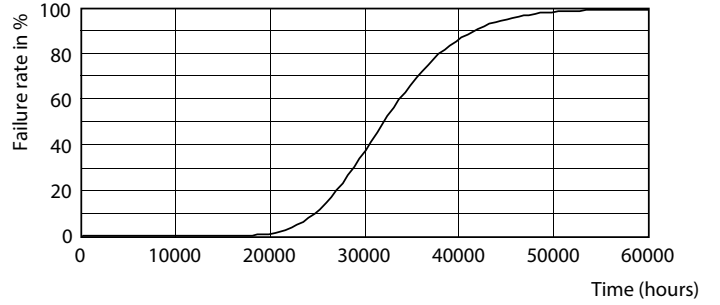
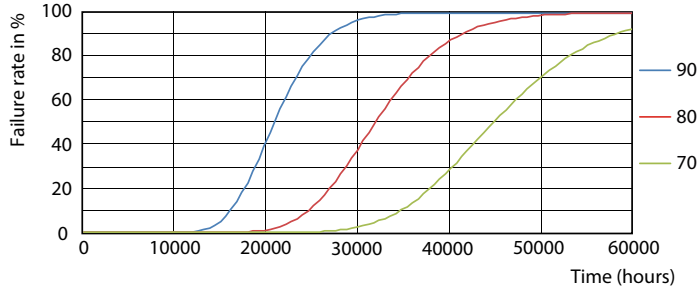
LEDtube CorePro PLL HF 24W 2G11 865 24D ND



LEDtube CorePro PLL HF 24W 2G11 865 24D ND

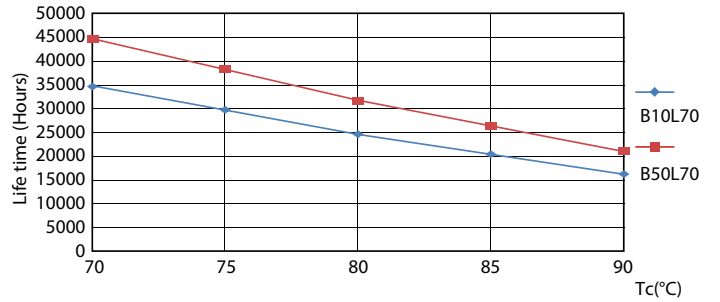
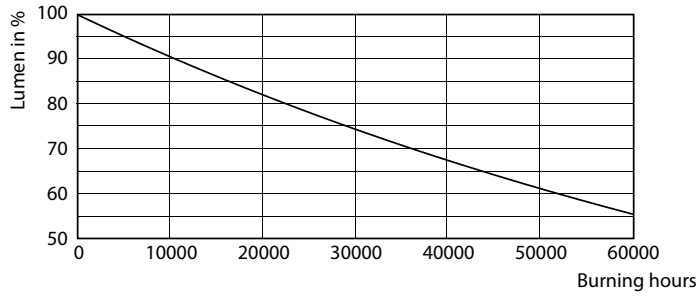
# CorePro LED PLL

## Lifetime



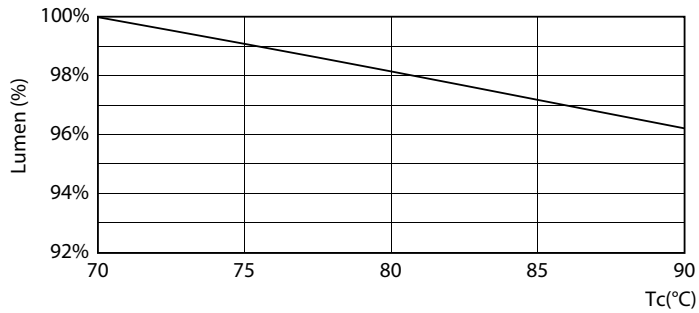
LEDtube CorePro PLL HF 24W 2G11 830 24D ND

LEDtube CorePro PLL HF 24W 2G11 830 24D ND



LEDtube CorePro PLL HF 24W 2G11 830 24D ND

LEDtube CorePro PLL HF 24W 2G11 830 24D ND



LEDtube CorePro PLL HF 24W 2G11 830 24D ND

## CorePro LED PLL

