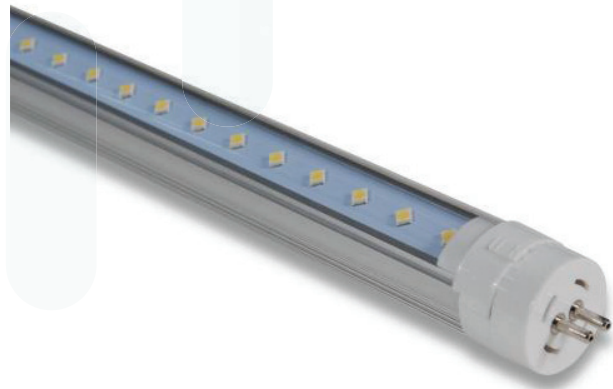


## 5ft led T5 Kingswood tube

### Features In Brief:

1. Energy saving exceeding 50%
2. Uniformed light distribution
3. Original Epistar 2835 chips
4. Instant start, no flicking, no humming.
5. Unique driver design
6. Internal driver
7. 3 year warranty



Heathfield LED Tubes are designed to replace the traditional fluorescent tube offering an energy saving alternative. The tube is constructed of a high grade aluminium heat sync and custom designed light guide lens offering a uniformed light distribution, using our specifically designed driver and original Epistar 2835 chips we can offer a stable operation with long life time claims and low optical decay levels.

Part Number	Colour	Luminous Flux
T520LED/6000K/ID	6000K	2100 lm
T520LED/4000K/ID	4000K	2090 lm
T520LED/3000K/ID	3000K	2070 lm

## 5ft led T5 Kingswood tube Product Features

### 20w Range

Item	T520LED/6000K/ID	T520LED/4000K/ID	T520LED/3000K/ID
Input Voltage	100-277V	100-277V	100-277V
Power Consumption	20W	20W	20W
Colour	Daylight	Cool White	Warm White
Colour Temperature	6000k	4000k	3000k
Life Time	>40,000 Hour	>40,000 Hour	>40,000 Hour
Operating Temperature	-10°C to + 65°C	-10°C to + 65°C	-10°C to + 65°C
Storage Temperature	-10°C to + 60°C	-10°C to + 60°C	-10°C to + 60°C
Lumen	2100lm	2090lm	2070lm
Certificates	CE, RoHS, FCC, WEEE	CE, RoHS, FCC, WEEE	CE, RoHS, FCC, WEEE
Beam Angle	140°	140°	140°
Dimensions	1449x22mm	1449x22mm	1449x22mm
CRI	80	80	80

\*Based on clear cover lens

### Tube Images

